


Taiwan Young Year electronics CO., Ltd.

Micro ATX power supply

Photo	Model
	ATX-68A

CHARACTERISTICS

- High efficiency.
- Low noise and ripple.
- Short circuit protection on all outputs.
- Resettable power shut down.
- Approved by UL 1950, CSA 22.2 Level 3.
- Complies with FCC part 15 subpart J class B 115 VAC operation and CISPR 22 230 VAC operation.
- 100% burn-in under high ambient temperature (45°C)
- MTBF above 100,000 hrs at 25°C.

❖ SPECIFICATION ❖

Input

AC INPUT VOLTAGE	95 to 264 VAC
AC INPUT VOLTAGE OF NORMAL OPERATION:	115 VAC or 230 VAC
AC INPUT FREQUENCY	47 to 63 HZ
AC INPUT CURRENT	5.0A RMS Max. for 115 VAC
	2.5A RMS Max. for 230 VAC
MAX. INRUSH CURRENT	40A for 115 VAC Cold Start
	80A for 230 VAC Cold Start

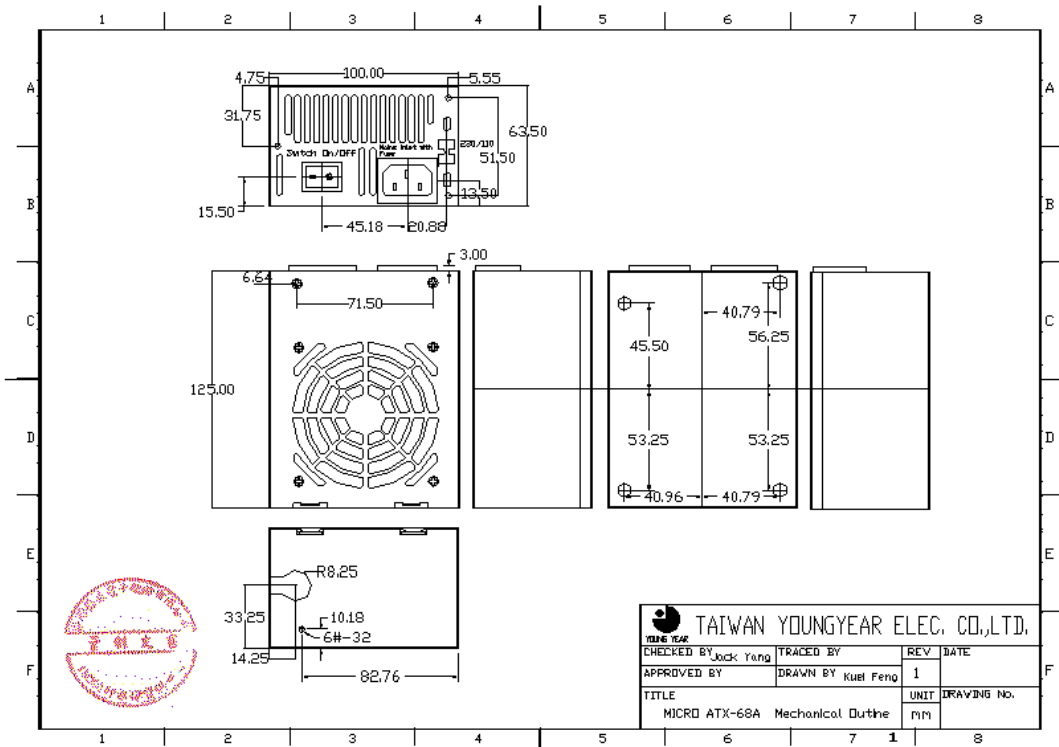
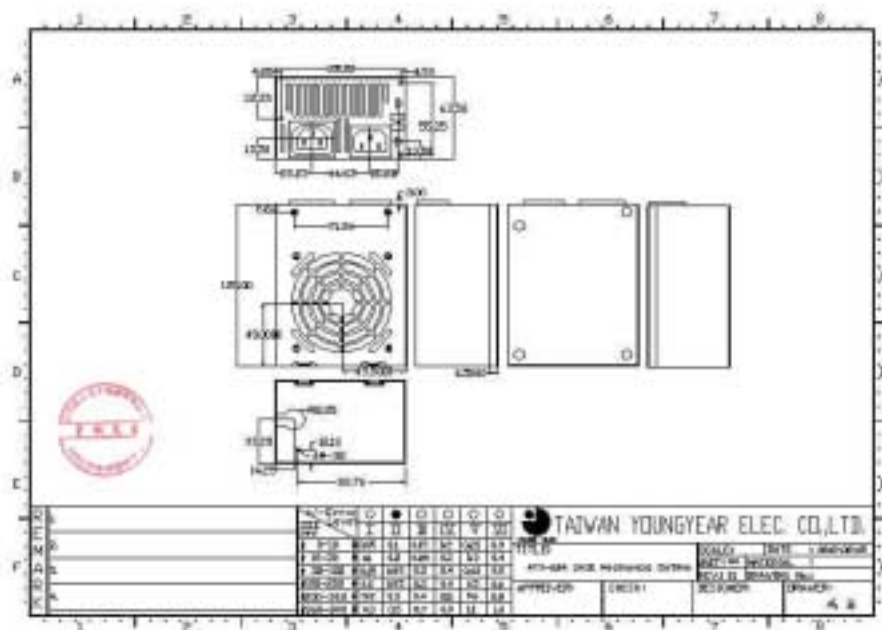
Output

Model	Output	+3.3V DC	+5V DC	+12V DC	-12V DC	+5VSB
ATX-68A	150W	6.0A	12.0A	5.0A	0.3A	0.75A

FEATURES

SAFETY STANDARD		TUV, UL, CSA, CB
EMI STANDARD		CE, FCC, CNS
SHORT CIRCUIT PROTECTION		All Output equipped with short circuit
OPERATING TEMPERATURE		0 to +40 degree C
STORAGE TEMPERATURE		-20 to +85 degree C
STORAGE HUMIDITY		10% to 90% RH
COOLING:		Forced Air Ventilation by 8cm DC Fan
DIELECTRIC WITHSTAND (HI-POT) TEST	INPUT TO OUTPUT	1500V-1 sec. (10mA Cut-Off)
	INPUT TO GROUND	1500V-1 sec. (10mA Cut-Off)
ISULATION RESISTANCE	INPUT TO OUTPUT	50MOhm Min.
	INPUT TO GROUND	50MOhm Min.

Dimension



Taiwan Young Year electronics CO., Ltd.
No.113 Lin Sen Road ,Taoyuan 330 ,Taiwan, R.O.C.

TEL: 886-3-3617506 , FAX: 886-3-3617472

Key Contact : Mike Chiu (Sales Representative)

E-mail: sales@youngyear.com

[Http://www.youngyear.com](http://www.youngyear.com)